
Instruction for rotary installation

First step:

1. If your machine don't have motorized up and down table, please use "Lifter Handle" to rotate the bar and make sure the working table is in the right position.





Lifter Handle

2.If your machine have motorized up and down table,press U+ and U- to adjust the working table to the right position.

Second step:

put rotary on the working plate, Please check the picture below:



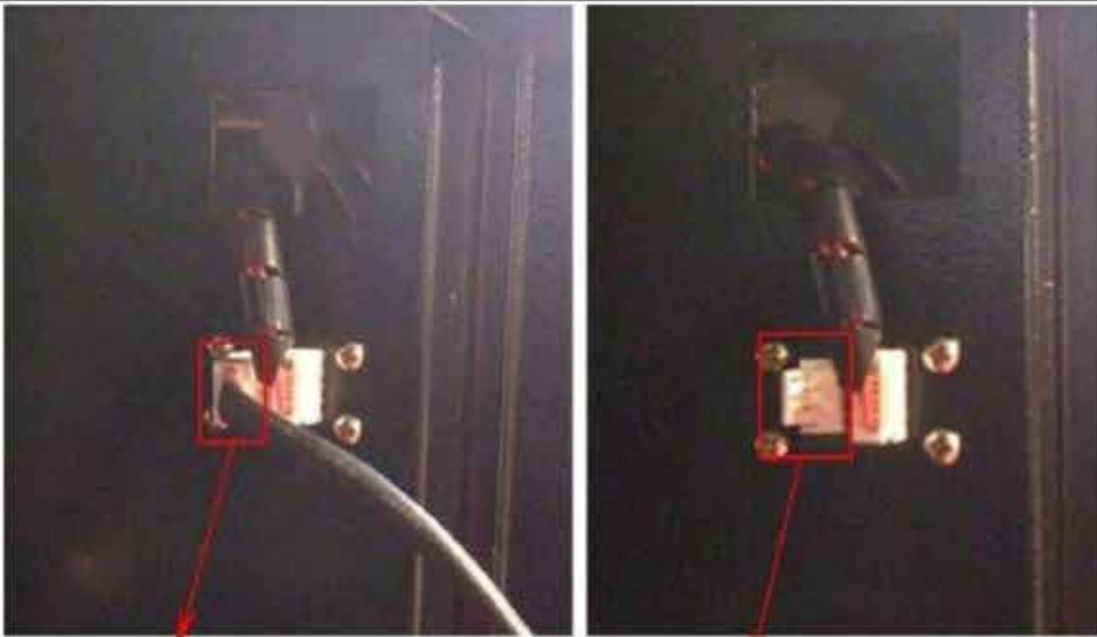
Third step:

Connect rotary with machine as the picture shows by the cable:

1) please plug in the rotary use wire first, as pictures show:



2) then plug the wire in the port to connect the machine:



Please plug into the port(Plug 1)

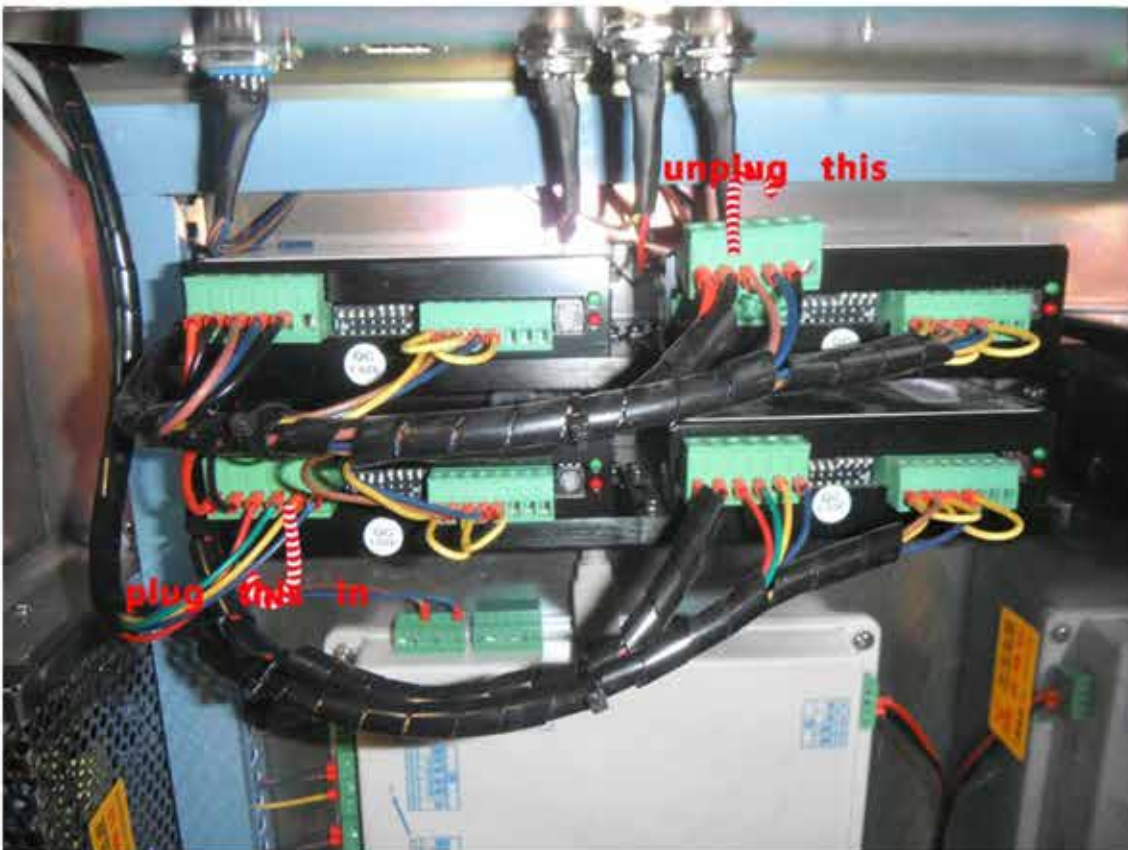
Plug 1

3) The finish picture is below:



Fourth step:

Note: when using rotary attachment, we will use the motor for itself, so we should connect the cable of rotary attachment to Y axis driver :so we should disconnect plug 2 and then connect plug 3



Fifth step:

Adjust focal length using acrylic block.

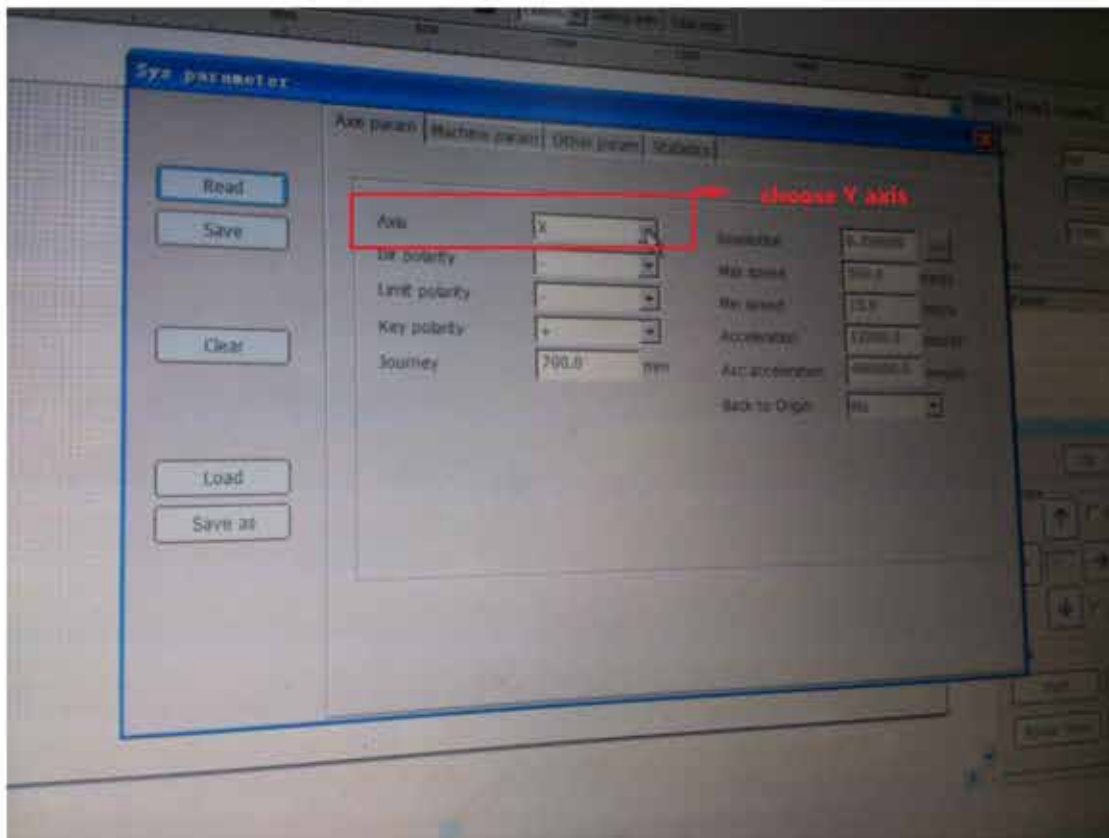
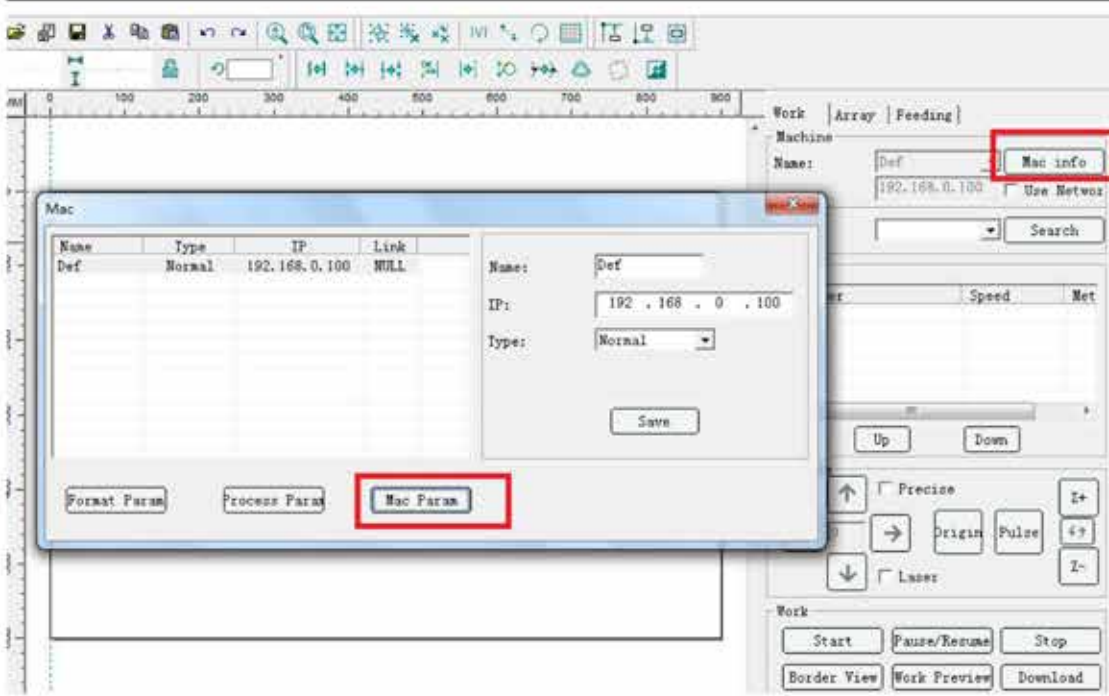


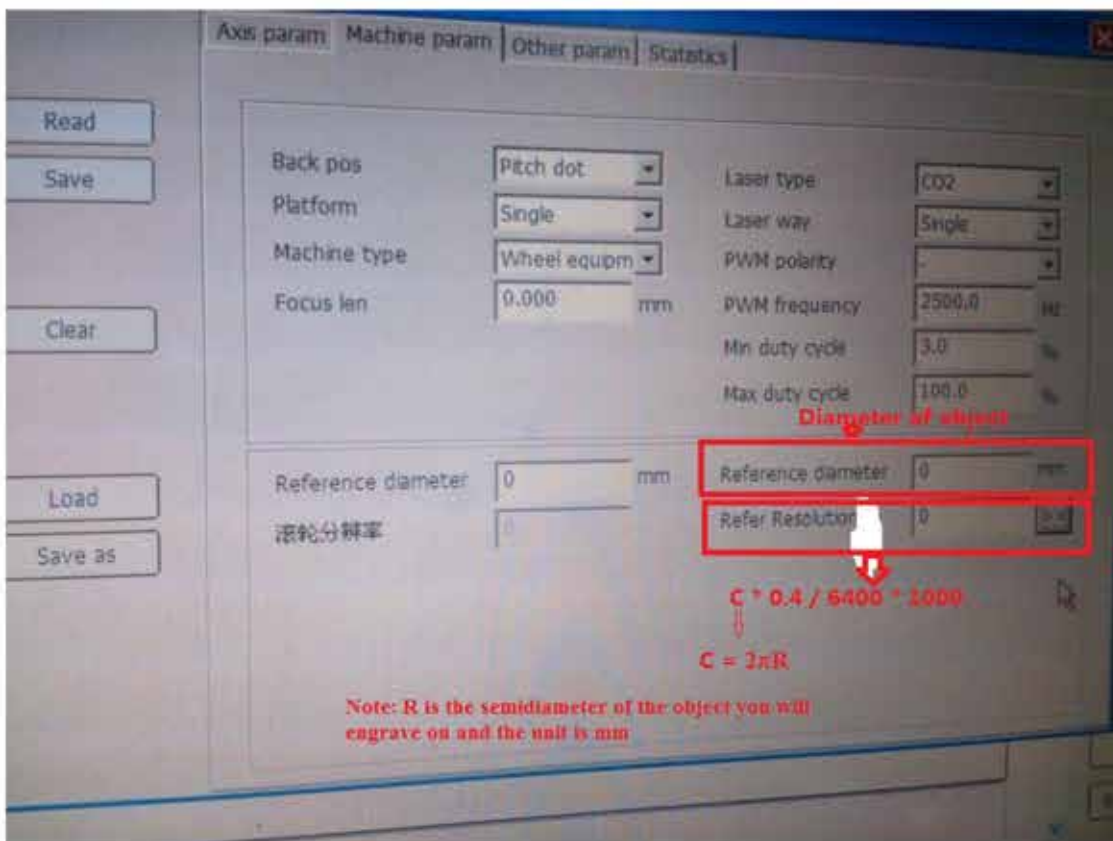
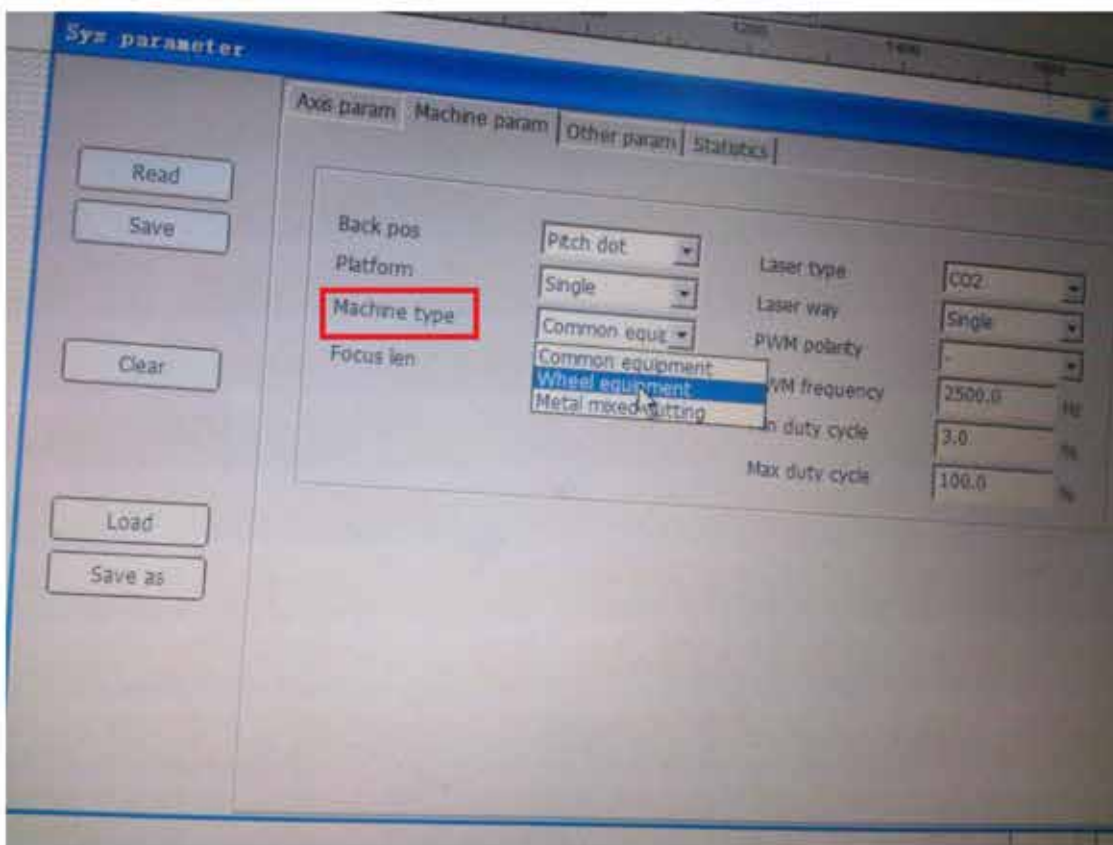
After all is done, please open the software and change "Step length" for Y-axis as the picture shows.

Please do setting as following pictures show one step by step.

Method 1:

Set up parameters for Y axis in AutoLaser software:



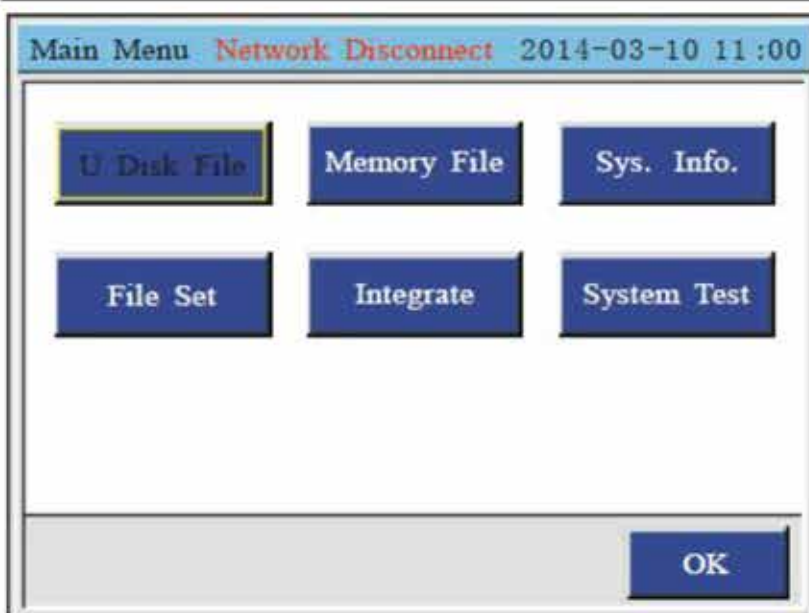


Method 2:

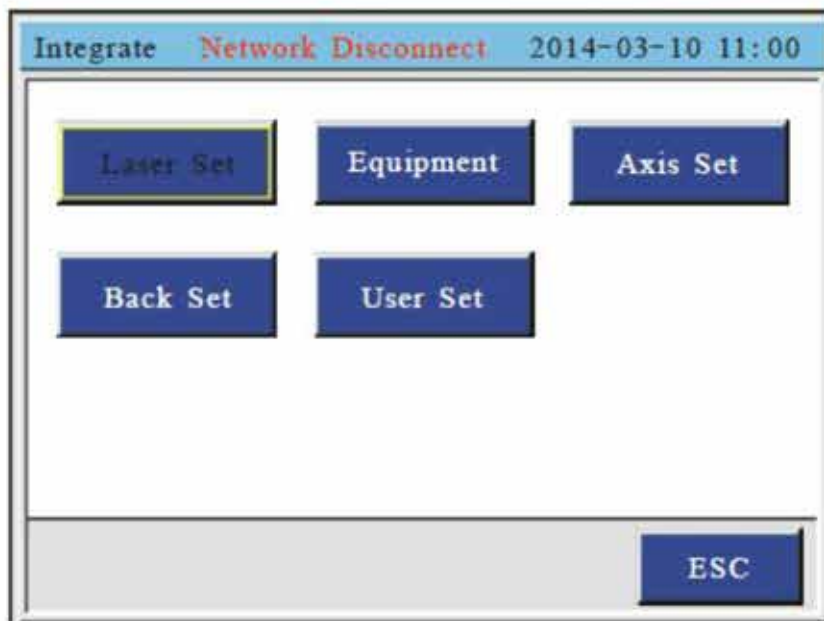
Set up parameters for Y axis in Control Panel directly:

1. Press "Menu" to go into main menu:

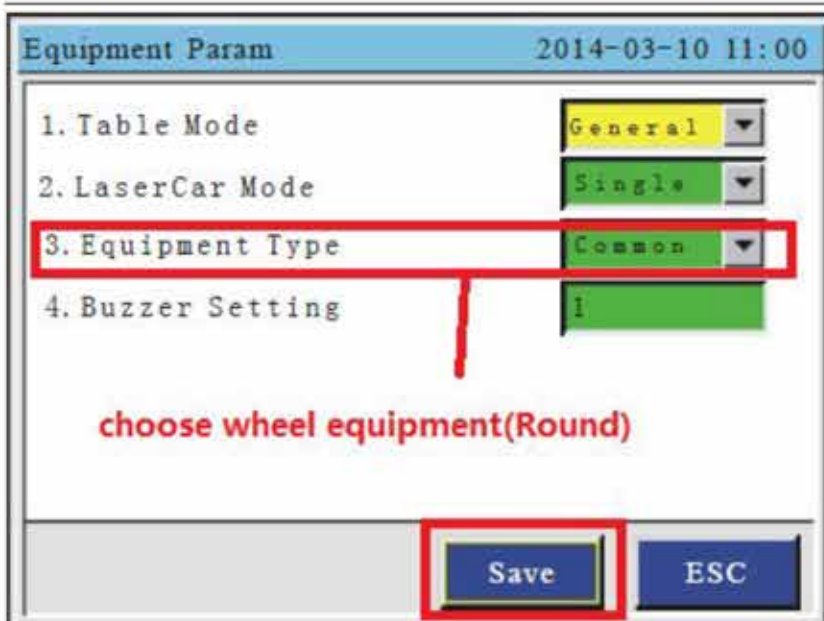




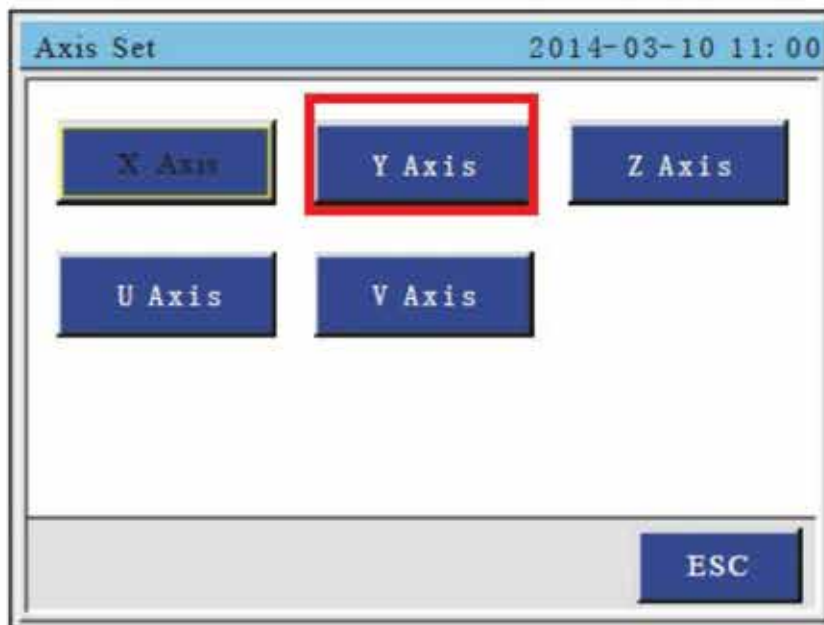
2. Choose "Integrate", then press the "Enter" to enter, show as:



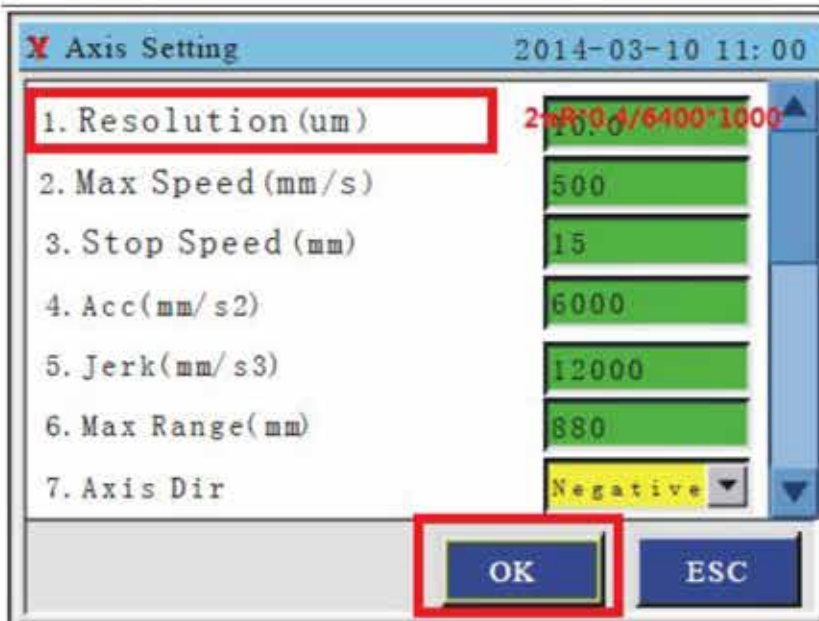
3. In the Integrate interface choose "Equipment" to enter, show as:



4. In the Integrate Setting interface, choose "Axis Set" to enter, show as:



5. Press the "Up/Down" key to select the needed operation, for example, the Y axis setting:



Remark:

The other parameters are the same as working without the rotary attachment.

After doing all as above, it is easy to output with rotary.